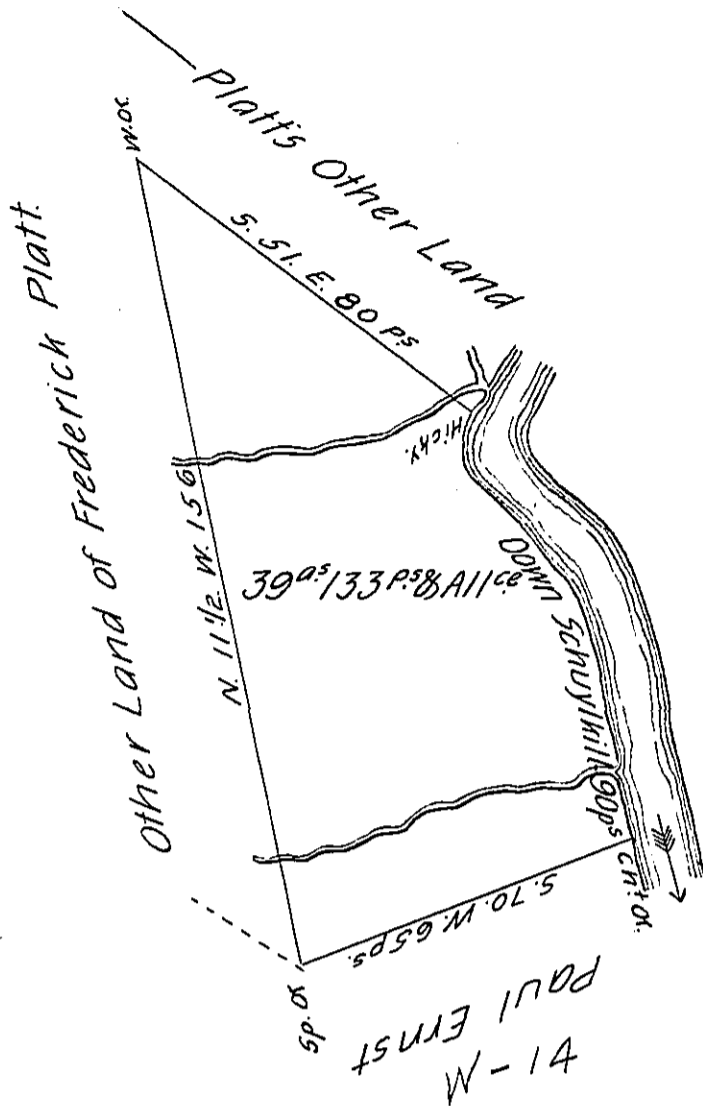


C-172-90



In Pursuance of a Warrant dated 4<sup>th</sup> August 1750. Surveyed on the 7<sup>th</sup> Day of May 1785. To Frederick Platt in Right of Mary Wright, the Above Described Tract of Land, Situate in Bern Township, Berks County. Containing Thirty Nine Acres & 133 perches, & the Allowance of 6<sup>th</sup> Cent. for Roads &c<sup>o</sup>

A. Lytle, D<sup>y</sup> Surv<sup>r</sup>.

To John Lukins, Esq<sup>r</sup>.

5-11-87 Gen!

IN TESTIMONY that the above is a copy of the original remaining on file in the Department of Internal Affairs of Pennsylvania, made conformably to an Act of Assembly approved the 16th day of February, 1833, I have hereunto set my Hand and caused the Seal of said Department to be affixed at Harrisburg, this fourteenth day of June 1906.

*George R. ...*  
 Secretary of Internal Affairs.